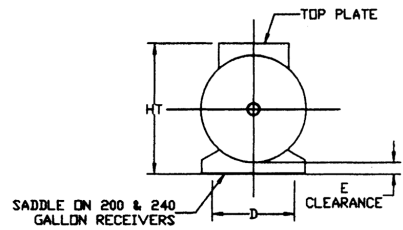
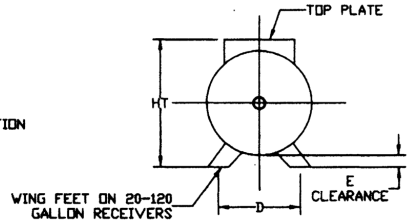
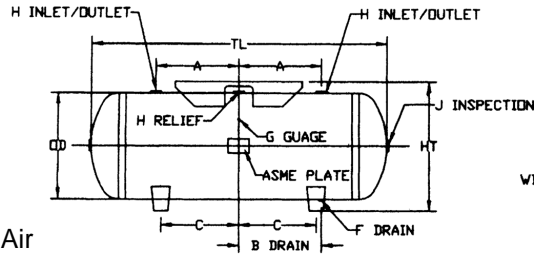


## HORIZONTAL ASME AIR RECEIVER WITH SUPPORTS



**USE:**

For Storage of Compressed Air

**SPECIFICATION:**

Carbon Steel Construction  
 Maximum Temperature 650° F  
 See Column for Working Pressure of Tank (W.P.)  
 A.S.M.E. Certified

PART NUMBER	ACTUAL VOLUME	CUBIC FEET	DIAMETER OD	LENGTH TL	HEIGHT HT	W.P.	WEIGHT	TOP PLATE
HAR-020	20 GAL.	2.7	14	33	84	200	68	9 x 20
HAR-030	30 GAL.	4.0	16	38	19-3/4	200	106	12 x 24
HAR-060	60 GAL.	8.0	20	38	24-1/8	200	211	14 x 30
HAR-080	80 GAL.	10.7	20	63	23-7/8	200	300	14 x 66
HAR-120	80 GAL.	16.0	24	63	30	200	480	16 x 74
HAR-200	200 GAL.	26.7	30	72	35-5/8	200	630	16 x 74
HAR-240	240 GAL.	32.1	30	84	36-5/8	200	700	16 x 74

PART NUMBER	A (IN.)	B (IN.)	C (IN.)	D (IN.)	E (IN.)	F (IN.)	G (IN.)	H (IN.)	J (IN.)
HAR-020	10-5/8	10-5/8	8	11-11/16	2	1/4	1/4	1/2	1-1/2
HAR-030	13-1/4	13-1/4	10	12-13/16	2	1/4	1/4	3/4	1-1/2
HAR-060	22-1/2	16-1/2	12	16-1/2	2	1/4	1/4	3/4	2
HAR-080	16-1/2	16-1/2	16	16-1/2	2	1/4	1/4	1	2
HAR-120	24	14	20	22	2	1/4	1/4	2	2
HAR-200	23-1/2	23-1/2	19	23-1/2	2	1/4	1/4	2	2
HAR-240	23-1/2	23-1/2	22	23-1/2	2	1/4	1/4	2	2

For Relief Valves & Pressure Gauges, Please Contact Us.  
 For Automatic Moisture Removal, We Recommend Adding Our Underdrain, Please Contact Us.  
 Larger Sizes Can Be Fabricated to Meet Your Needs, Please Contact Us.  
 Openings are N.P.T.  
 Note: Top Plate Undrilled

JOB NAME \_\_\_\_\_  
 LOCATION \_\_\_\_\_  
 \_\_\_\_\_  
 CONTRACTOR \_\_\_\_\_  
 CONTRACTOR P.O. NO. \_\_\_\_\_

ITEMS	QUANTITY
_____	_____
_____	_____
_____	_____
_____	_____
_____	_____

**MECHANICAL ROOM SUPPLIES**

**A GFP Company**  
 108-C North Shorecrest Drive  
 Columbia, SC 29209  
 803.783.0648  
 TOLL FREE 866.267.1379  
 FAX 803.783.0158  
 www.mechanicalroomsupplies.com